

Photoluminescence characterization of III-V materials epitaxially grown on silicon

B. Tian,¹ M. Paladugu², Z. Wang,¹ P. Marianna² and D. Thourhout¹

¹, INTEC, Ghent University, Sint-Pietersnieuwstraat 41, 9000 Gent, Belgium

² IMEC, Kapeldreef 75, B-3001 Leuven, Belgium

Silicon photonics is widely adopted as a competitive candidate to meet the increasing interconnects demands of ICs. However, the key component – an efficient laser, is still missing due to its indirect bandgap. The photonics group of Ghent University is nowadays working with IMEC in developing an epitaxial method to integrate III-Vs on silicon. To characterize the III-V/Si material quality, a micro-PL setup, which has wide range of pump intensity, is utilized. Measurement results show that different defects (threading dislocations, anti-phase boundaries) do influence the optical property of the material, and the overall material quality shows the potential for device demonstration.

I. INTRODUCTION

Photonics has been witnessed an explosion in lighting, display, communication, medicine and other application fields in last few decades. As a promising platform, silicon photonics keeps drawing more and more attention since one can integrate electronic and photonic devices together to achieve more complicated and versatile functionalities, while keeping the cost low. In particular, silicon photonics is a very competitive candidate for inter- and intra-chip optical interconnects, while the conventional copper based solution starts to hit its physical limit.

As the key component for on-chip optical communication, an integrated laser on silicon has already triggered a furious race. There exist several approaches. Some groups focus on engineering the band structure of group IV material like Si and Ge^[1], however large amount of pumping power is needed to achieve reasonable optical gain. Another solution based on III-V heterogeneously bonding technics, in which people bond III-V dies on silicon or SOI wafer by using BCB (BenzoCycloButene)^[2] or molecular force^[3], obtains significant achievements in the last decade, but it still confronts problems like low yielding and insufficient heat dissipation.

As the optimal solution, epitaxial growth of III-Vs on silicon has been proposed since 1980's^[4]. However, the major problem remains unresolved, in particular, the threading dislocation due to 8.1% lattice mismatch and the cracks arising from 76.9% thermal expansion coefficient mismatch can act as nonradiative centers, which hinder the carriers from radiative recombination. In this work, a new approach, which utilizes high aspect ratio trenches to confine defects^[5], has been carried out. PL characterization shows that reasonable good material quality has been achieved for device demonstration.

II. EXPERIMENTS

Epitaxial growth of InP pillar on silicon

Fig. 1 shows a typical transmission electron microscopy (TEM) photo of an InP pillar grown on silicon. The epitaxial growth was performed in IMEC. In general, the aspect-ratio trapping (ART) effect^[6] (see the trapping of TDs in Fig. 1) is used to confine the

Photoluminescence characterization of integrated III-V materials epitaxially grown on silicon

threading dislocations in the bottom part of the pillar, while keeping the top part unaffected. Furthermore, germanium is used as an intermediary material between InP and Silicon, which is well engineered to minimize the formation of anti-phase-boundary due to the polar-nonpolar interface between silicon and InP.

Two different patterns were used for epitaxial growth, and the sketches can be found in the inserts of Fig. 2. Insert a shows a matrix of square shaped trenches while insert b shows a matrix of rectangle shaped trenches. InP is selectively grown in these trenches, a typical scanning electron microscopy (SEM) photo (top view) of is shown in Fig.2. InP grains with different sizes and shapes are formed on top of pillars by lateral overgrowth of InP on the mask surface.

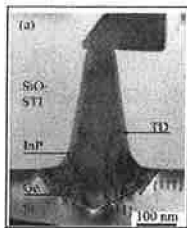


Fig. 1 TEM photo of a typical InP pillar on silicon. Threading dislocations (TD) are terminated by the high aspect ratio SiO₂ trench.

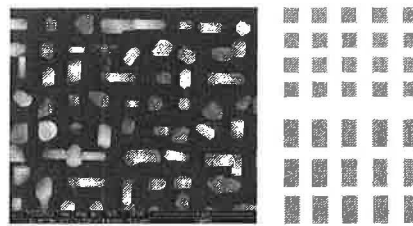


Fig. 2 A SEM top view of the sample with InP grown on silicon. Inserts: two trench patterns used for growth a) square matrix, b) rectangular matrix.

Photoluminescence setup

Fig. 3 shows the configuration of the PL setup used for characterization. After beam expansion, the pumping light is focused by a high magnification objective onto the sample. Pumping area can be adjusted by changing the size of the iris. PL is collected by the same objective and then imaged on the slit of monochromator. PL emission can also be monitored by a camera (see Fig. 3).

Two different pump lasers are used alternatively in the measurement. One is CW laser, which has 1W output power at 445nm. The other one is a Nd:YAG pulse laser, whose pulse energy is 0.9J at 532 nm, and the pulse duration is 10ns. In the following measurement 800Hz repetition rate was chosen for the pulse laser. We could control the pumping intensity by using different neutral density (ND) filters, while the combination of a half-wave plate and polarizer also allow us to adjust the intensity continuously. A Thermo-electric (TE) cooled silicon detector is used for light detection. A lock-in amplifier is routinely used to improve the signal-to-noise ratio.

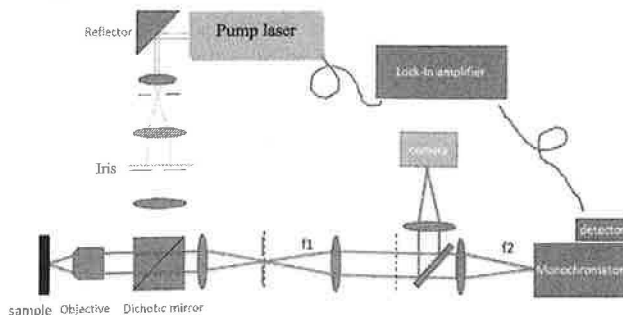


Fig. 3 A schematic diagram of the micro-PL setup

III. RESULTS AND DISCUSSION

Photoluminescence spectrums have been measured at room temperature. Since the pumping area is around 40~50 micrometres in diameter, the luminescence collected mainly contains contributions from emission of large number of InP pillars.

CW pump laser results

Fig.4 shows the typical photoluminescence spectrums recorded by using blue CW pump laser. PL spectrum measured from a reference pure InP sample is also displayed. To be noticed here that the intensity of the PL results from pillars have been multiplied by 10 to compensate the low filling factor (the area covered by InP divided by the whole sample area).

From the figure one can find that there are two individual peaks in the PL (see the black dotted curves), one locates round 910nm while the other can be found around 930nm. Peak around 930nm is similar to the reference in terms of peak position, therefore we assume that this peak is mainly contributed by the bulky band-band transition. Regarding the other peak around 910nm, two possible origins can be provided. One is due to the strain induced by the thermal expansion mismatch between InP and SiO₂ during the cooling down of the sample after epitaxy. Similar blue-shift has also been identified by other groups [7]. The other possibility is the quantum effects induced by the close package of two crystalline phases (zincblende and wurtzite) in the twins (see insert of Fig.4). Similar results have also been obtained in PL characterizations of nanowires [8].

For the growth on b type pattern, since larger trench width will degrade the dislocation trapping effect, one can expect worse material quality. Figure 5 shows the results, and one can find similar curves with two different peaks. However, in this case the peak around 910nm becomes comparable to the peak around 930nm, in terms of magnitude, which tells that the bulky band-band transition is reduced due to the worse material quality.

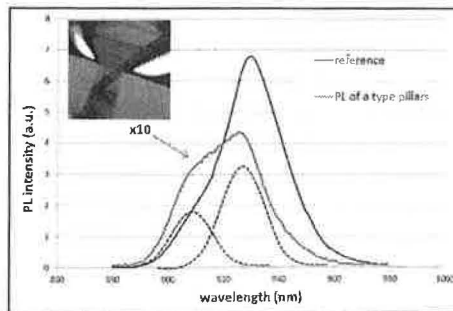


Fig. 4 PL spectrums of InP pillars grown on pattern a (see insert of Fig. 2) under CW pumping. Black dot curves are plotted to approximately indicate the locations of two emission peaks. Insert: TEM photo of one InP pillar.

Pulse pump laser results

Due to the very short pulse duration, the peak pump intensity of the pulse laser can be orders of magnitude higher than the CW laser. Fig. 6 shows the photoluminescence spectra obtained by pulsed laser pumping. One could expect a similar spectrum as the

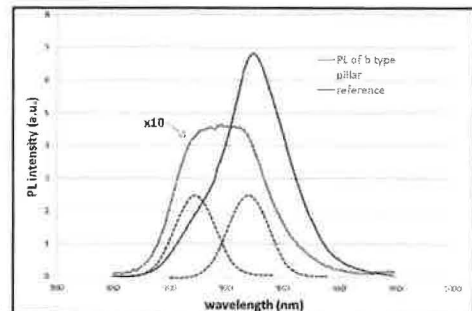


Fig. 5 PL spectrums of InP pillars grown on pattern b (see insert of Fig. 2) under CW pumping. Black dot curves are plotted to approximately indicate the locations of two emission peaks.

Photoluminescence characterization of integrated III-V materials epitaxially grown on silicon

previous results but with narrower PL peaks, since the non-radiative recombination centres induced by defects or surface states would be saturated by the high pumping intensity. However the results are very different. Several sharp peaks appear in the spectrum, whose locations vary across the whole sample region. One can conclude that some resonance mechanisms have been formed, either inside individual InP grains or between adjacent InP pillars. The high pump intensity provides enough grain to overcome the loss, which makes the resonance more significant. Furthermore, one can hardly find similar peaks from PL of InP grown on pattern b (see Fig. 7), which is mainly due to the less effective aspect-ratio trapping (ART) of the defects.

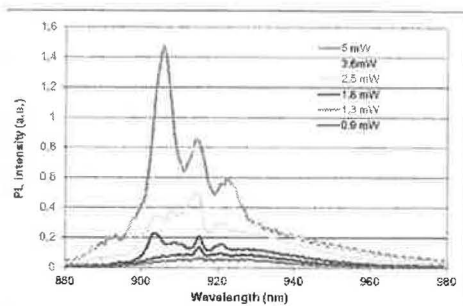


Fig. 6. PL spectrums of InP pillars grown on pattern a of Fig. 2 under pulsed pumping. Sharp peaks start to build up when pumping power is increased.

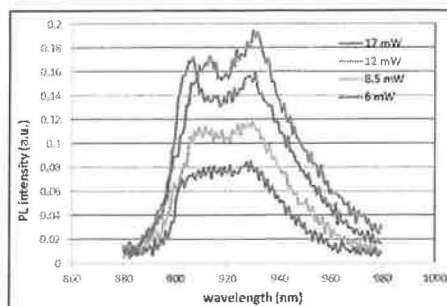


Fig. 7. PL spectrums of InP pillars grown on pattern b of Fig. 2 under pulsed pumping.

IV. CONCLUSION

PL characterization of InP grown on silicon with two different patterns are performed and analyzed. The measured PL spectrums show that the defect trapping effect is more effective by using small trench dimensions. The multi-peaks found in PL spectrum under pulse pumping indicate the formation of cavities and good material quality. More analysis is being carried out to understand the origin of these peaks and seek the possibility of device demonstration.

References

- [1] Liu, J., Sun, X., Camacho-Aguilera, R., Kimerling, L. C. & Michel, J., "Ge-on-Si laser operating at room temperature." *Opt. Lett.* 35, 679–681 (2010).
- [2] Park, H., Fang, A. W., Kodama, S. & Bowers, J. E. Hybrid silicon evanescent laser fabricated with a silicon waveguide and III–V off set quantum wells. *Opt. Express* 13, 9460–9464 (2005).
- [3] Roelkens, G., Van Thourhout, D., Baets, R., Notzel, R. & Smit, M. Laser emission and photodetection in an InP/InGaAsP layer integrated on and coupled to a silicon-on-insulator waveguide circuit. *Opt. Express* 14, 8154–8159 (2006).
- [4] T. E. Crumbaker, H. Y. Lee, M. J. Hafich, and G. Y. Robinson, Growth of InP on Si substrates by molecular beam epitaxy, *Appl. Phys. Lett.* 54, 140 (1989).
- [5] G. Wang, M.R. Leys, N.D. Nguyen, R. Loo, G. Brammertz, Growth of high quality InP layers in STI trenches on miscut Si (001) substrates, *Journal of Crystal Growth* (2011), vol. 315, pp. 32-36.
- [6] T.A. Langdo, C.W. Leitz, M.T. Currie, E.A. Fitzgerald, A. Lochtefeld, D.A. Antoniadis, High quality Ge on Si by epitaxial necking, *Appl. Phys. Lett.*, 76 (2000), p. 3700.
- [7] Vong, S. K. ; Cohen, R. M. ; Stringfellow, G. B., Effect of mismatch strain on band gap in III - V semiconductors, *Journal of Applied Physics* (1985) Volume: 57 , Issue: 12.
- [8] R. L. Woo, R. Xiao, Y. Kobayashi, L. Gao, N. Goel, M. K. Hudait, T. E. Mallouk and R. F. Hicks, Effect of Twinning on the Photoluminescence and Photoelectrochemical Properties of Indium Phosphide Nanowires Grown on Silicon (111), *Nano Lett.*, 2008, 8 (12), pp 4664–4669.

UMONS

Proceedings of the
2012 Annual Symposium of the
IEEE Photonics Society Benelux Chapter

TNO innovation
for life

 **LASER 2000**
The Future of Photonics

simac

Simac Electronics


Multitel
A.S.B.L. Fondateur pour la FPMs

fnrs
LA LIBERTÉ DE CHERCHER

 **POLYTECH
MONS**

 **META
MORPHOSE**


175 ans
Faculté Polytechnique

 **IEEE
photonics
SOCIETY**

Editors

Marc Wuilpart,
Christophe Caucheteur,
Marilina Mura

29 & 30 November 2012

University of Mons

Belgium

ISBN 978-2-8052-0184-4

IEEE Photonics Society Benelux Chapter

<http://www.photonics-benelux.org/>

University of Mons

Faculty of Engineering

Electromagnetism & Telecommunication Dpt.